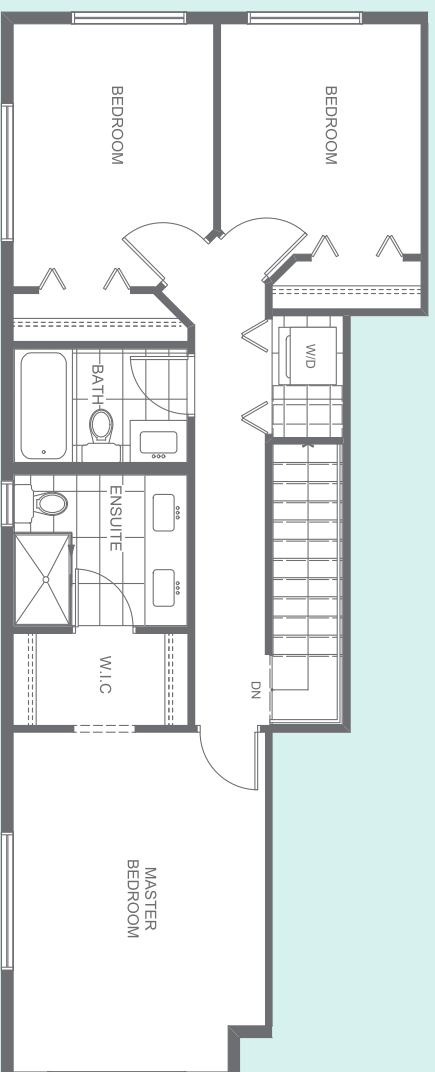


# CE1

3 Bedroom, 3.5 Bathroom  
Plus Flex Room | Approx. 1,919 sq. ft.

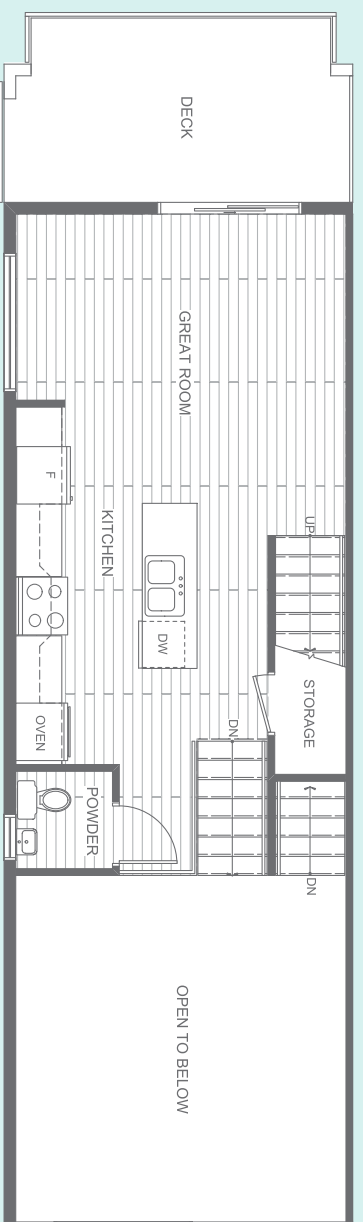
## UPPER

695 SQ. FT.  
Master Bedroom, Walk-in  
Closet, Ensuite, 2 Bedrooms,  
Bathroom and Laundry



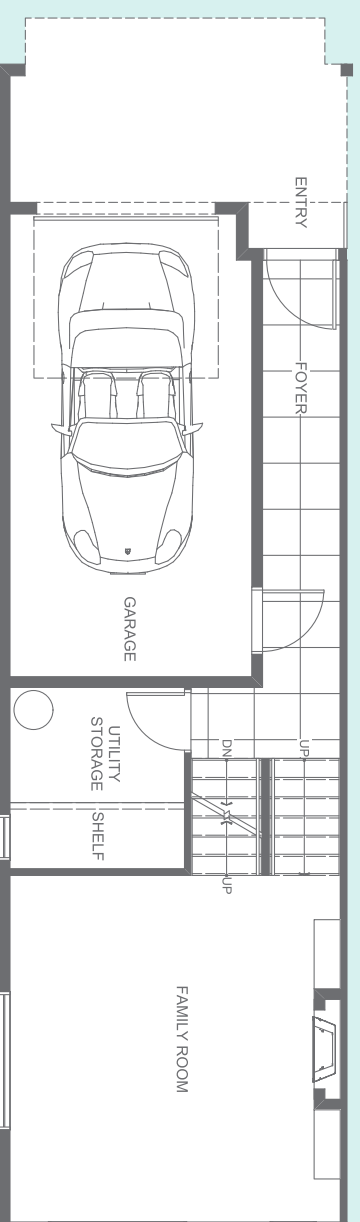
## MAIN

440 SQ. FT.  
Kitchen, Powder Room,  
Storage, Great Room and  
Deck



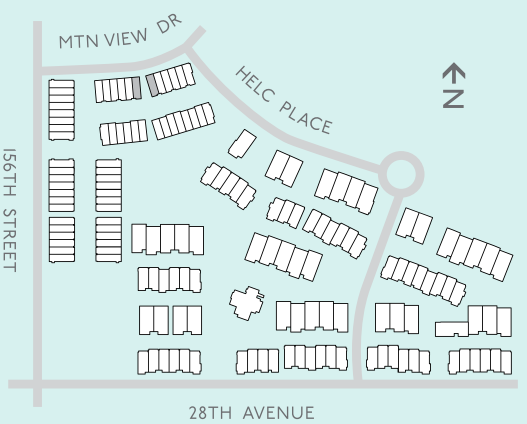
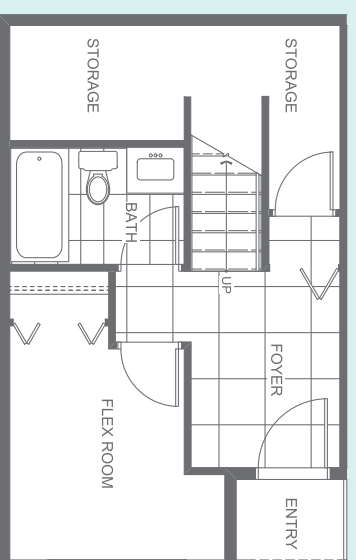
## GROUND

437 SQ. FT.  
Garage, Main Entry, Storage  
and Family Room



## BASEMENT

347 SQ. FT.  
Flex Room, Basement Entry,  
Bathroom and Storage



IN A CONTINUED EFFORT TO IMPROVE OUR HOMES, WE RESERVE THE RIGHT TO MODIFY PLANS, SPECIFICATIONS AND PRICES WITHOUT NOTICE. ROOM SIZES, SQUARE FOOTAGE, FEATURES AND OUTDOOR SPACES MAY VARY WITHIN THIS COMMUNITY. FLOOR PLANS MAY BE REVERSED BASED UPON LOCATION. ALL DIMENSIONS AND SIZES ARE APPROXIMATE. BUYERS ARE RECOMMENDED TO READ THE SALES DISCLOSURE STATEMENT AND REVIEW THE ARCHITECTURAL PLANS PRIOR TO PURCHASE. E.&O.E.