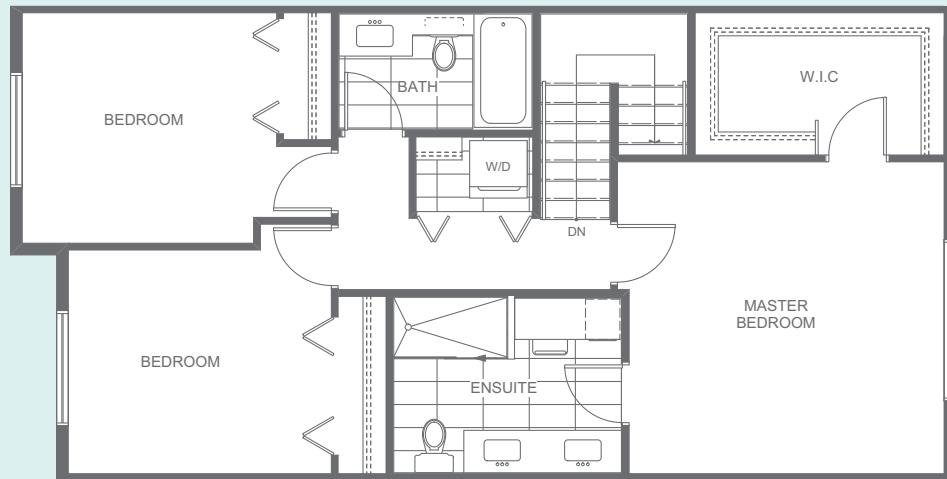


D4

4 Bedroom, 3.5 Bathroom
Double Garage | Approx. 1,983 sq.ft.

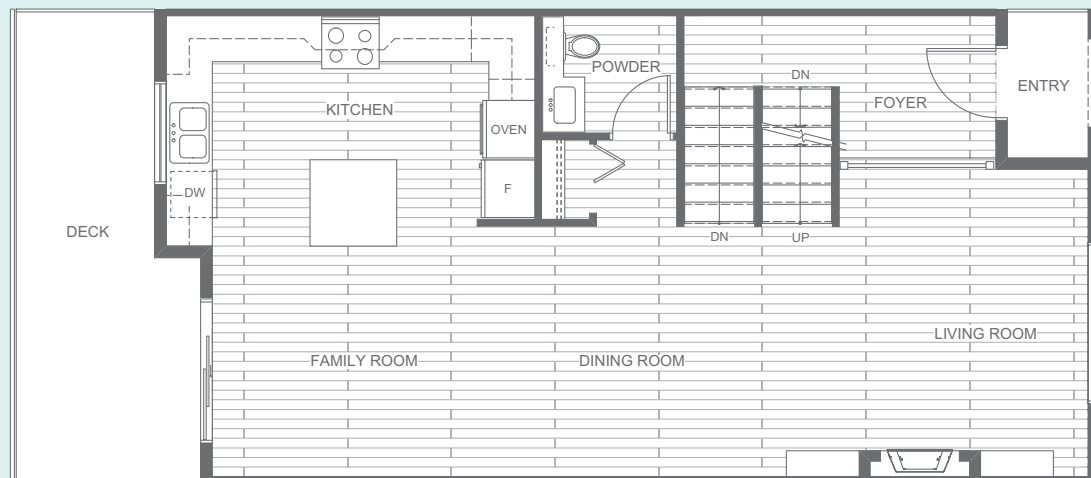
UPPER

829 SQ FT.
Master Bedroom, Walk-in Closet, Ensuite, 2 Bedrooms, Bathroom and Laundry



MAIN

802 SQ FT.
Living Room, Main Entry, Dining Room, Powder Room, Family Room, Kitchen and Deck



LOWER

352 SQ FT.
Side-by-side Garage, Garage Entry, Bedroom, Bathroom and Storage

